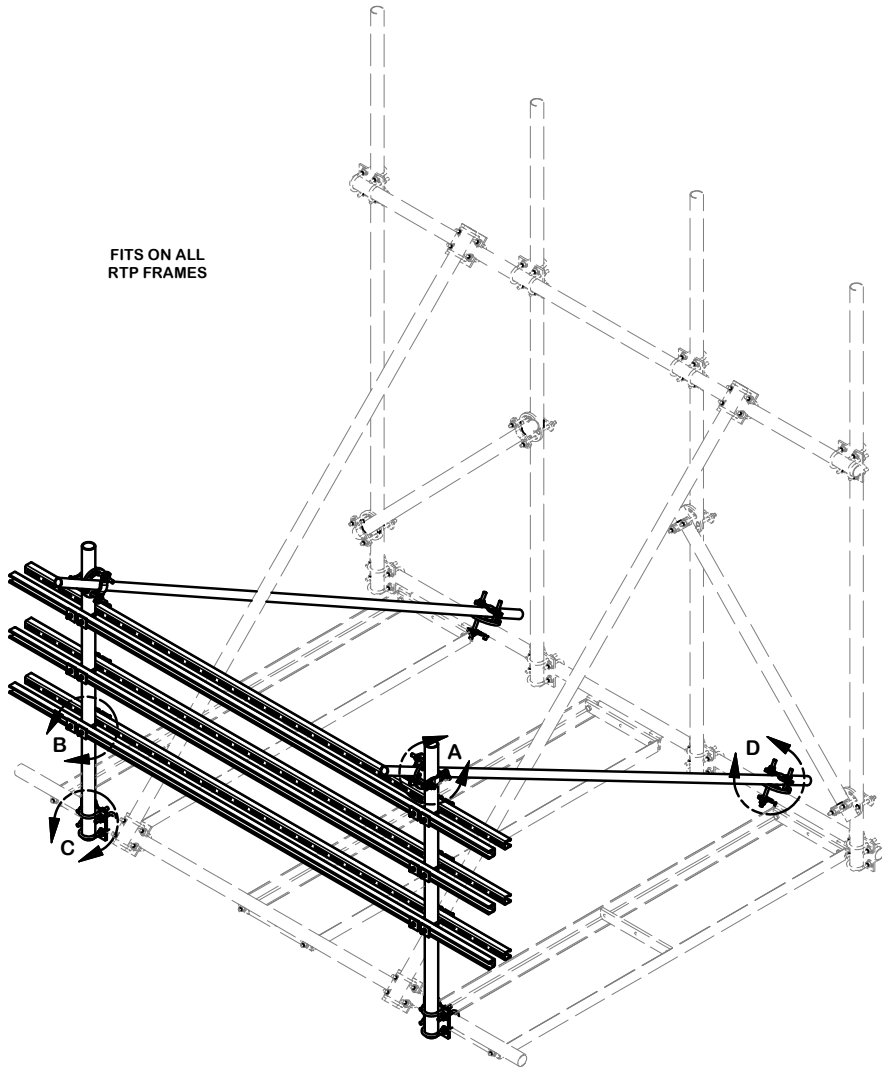
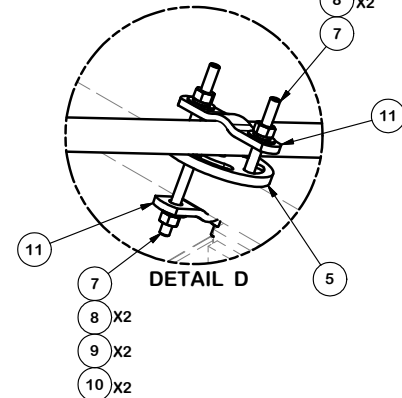
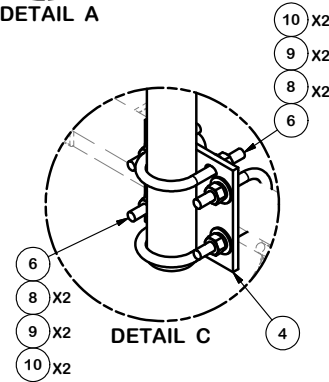
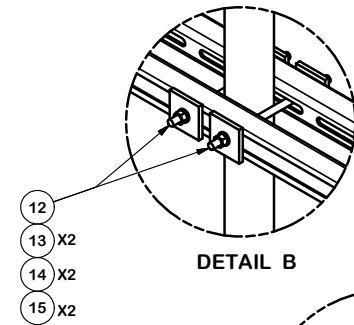
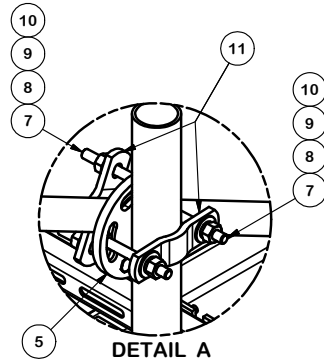


FITS ON ALL RTP FRAMES



PARTS LIST						
ITEM	QTY	PART NO.	PART DESCRIPTION	LENGTH	UNIT WT.	NET WT.
1	2	P1126	1 1/4" X 126" SCH 40 PIPE (STIFF ARM)	126 in	25.12	50.23
2	2	P263	2-3/8" X 63" SCH 40 GALVANIZED PIPE	63 in	20.18	40.37
3	6	UNT10	UNISTRUT		20.38	122.27
4	2	SCX1	CROSSOVER PLATE 2-3/8" X 2-3/8"		3.71	7.42
5	4	X-127594	FLAT DISK CLAMP PLATE 4" CENTERS (GALV.)		2.48	9.93
6	8	X-UB1212	1/2" X 2-1/2" X 4-1/2" X 2" U-BOLT (HDG.)		0.26	2.06
7	16	G1204	1/2" x 4" HDG HEX BOLT GR5 FULL THREAD	4 in	0.27	4.32
8	32	G12FW	1/2" HDG USS FLATWASHER		0.03	1.09
9	32	G12LW	1/2" HDG LOCKWASHER		0.01	0.44
10	32	G12NUT	1/2" HDG HEAVY 2H HEX NUT		0.07	2.29
11	8	X-100064	CLAMP (S) (4" V-CLAMP) GALVANIZED		0.91	7.30
12	12	SS38R-8	3/8" X 8" THREADED ROD (STAINLESS STEEL)		0.25	3.01
13	24	SQW38	3/8" SQUARE WASHER (GALV.)	2 in	0.27	6.55
14	24	SS38LW	3/8" SS LOCKWASHER		0.01	0.16
15	24	SS38NUT	3/8" SS HEX NUT		0.02	0.44
					TOTAL WT. #	260.83



**TOLERANCE NOTES**

TOLERANCES ON DIMENSIONS, UNLESS OTHERWISE NOTED ARE:  
 SAWED, SHEARED AND GAS CUT EDGES ( $\pm 0.030"$ )  
 DRILLED AND GAS CUT HOLES ( $\pm 0.030"$ ) - NO CONING OF HOLES  
 LASER CUT EDGES AND HOLES ( $\pm 0.010"$ ) - NO CONING OF HOLES  
 BENDS ARE  $\pm 1/2$  DEGREE  
 ALL OTHER MACHINING ( $\pm 0.030"$ )  
 ALL OTHER ASSEMBLY ( $\pm 0.060"$ )

PROPRIETARY NOTE:  
 THE DATA AND TECHNIQUES CONTAINED IN THIS DRAWING ARE PROPRIETARY INFORMATION OF VALMONT INDUSTRIES AND CONSIDERED A TRADE SECRET. ANY USE OR DISCLOSURE WITHOUT THE CONSENT OF VALMONT INDUSTRIES IS STRICTLY PROHIBITED.

DESCRIPTION

3 LEVEL  
 RRU / EQUIPMENT RACK  
 FOR RTP FRAMES

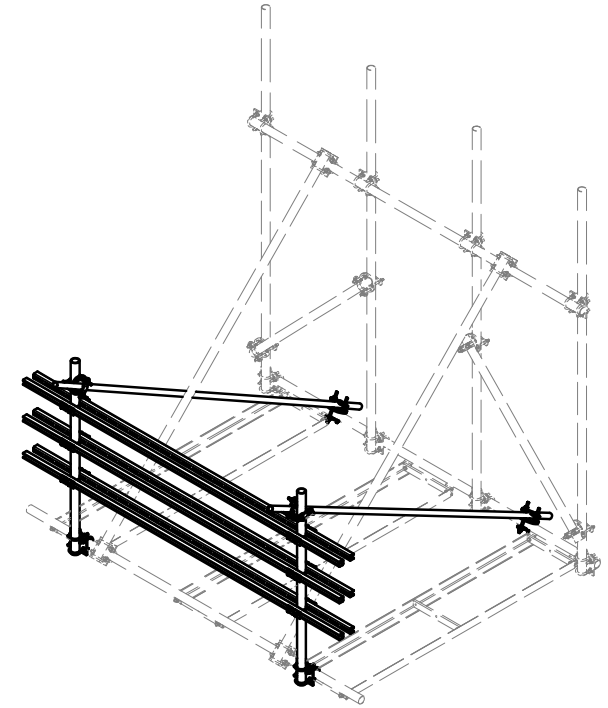
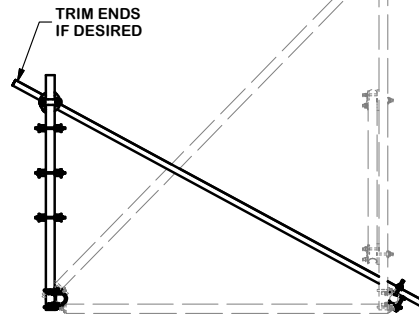
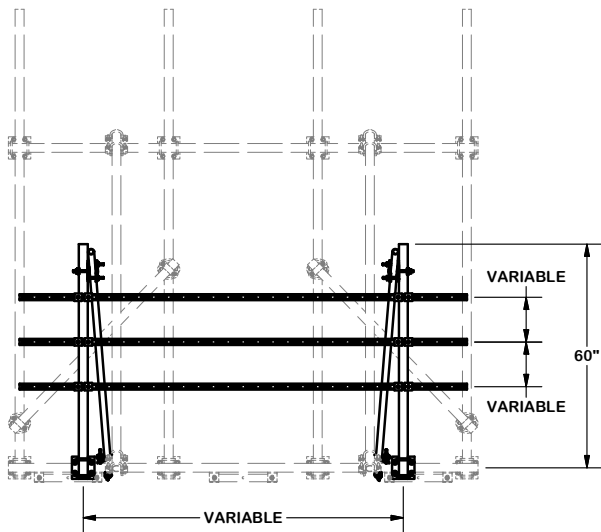
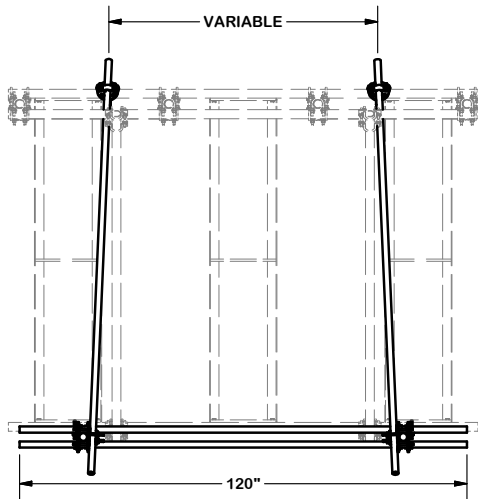
CPD NO.	DRAWN BY	ENG. APPROVAL
CLASS	DRAWING USAGE	CHECKED BY
81	01	CUSTOMER
		BMC 3/26/2015



Engineering Support Team:  
 1-888-753-7446

Locations:  
 New York, NY  
 Atlanta, GA  
 Los Angeles, CA  
 Plymouth, IN  
 Salem, OR  
 Dallas, TX

PART NO.	RTP-3UNT	PAGE
DWG. NO.	RTP-3UNT	1 OF 3



**TOLERANCE NOTES**

**TOLERANCES ON DIMENSIONS, UNLESS OTHERWISE NOTED ARE:**  
**SAWED, SHEARED AND GAS CUT EDGES ( $\pm 0.030$ " )**  
**DRILLED AND GAS CUT HOLES ( $\pm 0.030$ " ) - NO CONING OF HOLES**  
**LASER CUT EDGES AND HOLES ( $\pm 0.010$ " ) - NO CONING OF HOLES**  
**BENDS ARE  $\pm 1/2$  DEGREE**  
**ALL OTHER MACHINING ( $\pm 0.030$ " )**  
**ALL OTHER ASSEMBLY ( $\pm 0.060$ " )**

PROPRIETARY NOTE:  
 THE DATA AND TECHNIQUES CONTAINED IN THIS DRAWING ARE PROPRIETARY INFORMATION OF VALMONT INDUSTRIES AND CONSIDERED A TRADE SECRET. ANY USE OR DISCLOSURE WITHOUT THE CONSENT OF VALMONT INDUSTRIES IS STRICTLY PROHIBITED.

DESCRIPTION  
**3 LEVEL  
 RRU / EQUIPMENT RACK  
 FOR RTP FRAMES**

CPD NO.	DRAWN BY <b>CEK 3/26/2015</b>	ENG. APPROVAL
CLASS <b>81</b>	SUB <b>01</b>	DRAWING USAGE <b>CUSTOMER</b>
	CHECKED BY <b>BMC 3/26/2015</b>	

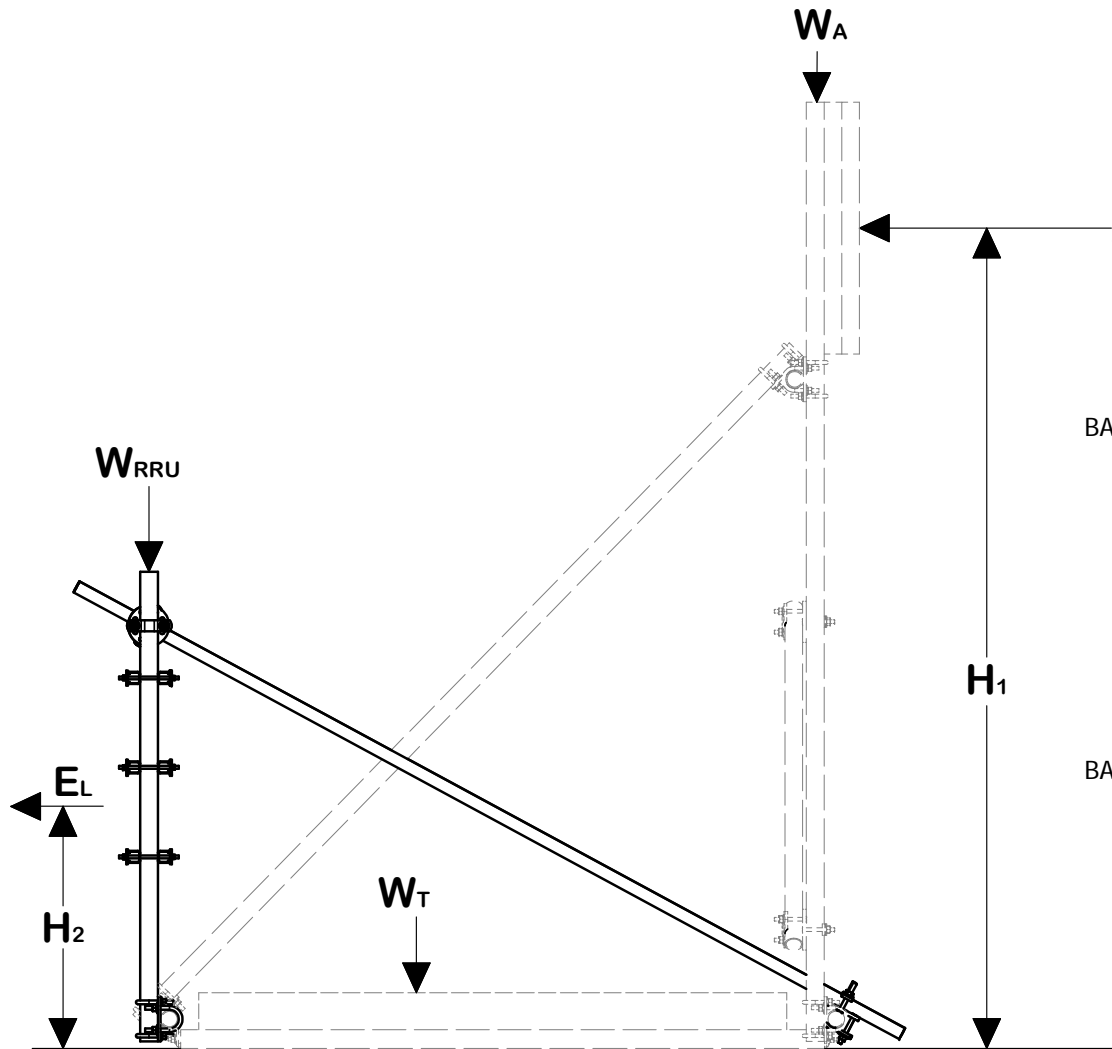
**SITE PRO 1**  
 A valmont COMPANY

Engineering Support Team:  
 1-888-753-7446

Locations:  
 New York, NY  
 Atlanta, GA  
 Los Angeles, CA  
 Plymouth, IN  
 Salem, OR  
 Dallas, TX

PART NO.	<b>RTP-3UNT</b>	PAGE
DWG. NO.	<b>RTP-3UNT</b>	<b>2 OF 3</b>

# RTP FRAMES & RTP-RRU BALLAST EQUATIONS



BALLAST EQUATION WITH 1.5 SAFETY FACTOR:

$$\text{FRONT WIND} = W_T = \frac{(((A_L * H_1) + (E_L * H_2)) * 1.5) - (W_A * 7.25)}{3.625}$$

$$\text{BACK WIND} = W_T = \frac{(((A_L * H_1) + (-E_L * H_2)) * 1.5) - (W_{RRU} * 7.25)}{3.625}$$

BALLAST EQUATION WITH REV. G LOADING:

$$\text{FRONT WIND} = W_T = \frac{(((A_L * H_1) + (E_L * H_2)) * 1.6) - (W_A * 7.25)}{3.625 (0.9)}$$

$$\text{BACK WIND} = W_T = \frac{(((A_L * H_1) + (-E_L * H_2)) * 1.6) - (W_{RRU} * 7.25)}{3.625 (0.9)}$$

$$\begin{aligned} \text{RTP10} &= W = W_T / 3 \\ \text{RTP12} &= W = W_T / 4 \\ \text{RTP14} &= W = W_T / 6 \end{aligned}$$

- E<sub>L</sub> = EQUIPMENT LOAD (NON-FACTORED) lbs
- A<sub>L</sub> = ANTENNA LOAD (NON-FACTORED) lbs
- H<sub>1</sub> & H<sub>2</sub> = HEIGHT FROM ROOFTOP ft
- W<sub>T</sub> = TOTAL BALLAST WEIGHT lbs
- W = BALLAST WEIGHT PER TRAY lbs
- W<sub>RRU</sub> = 200 + EQUIPMENT WEIGHT lbs
- W<sub>A</sub> = 260 + ANTENNA WEIGHT lbs

### TOLERANCE NOTES

**TOLERANCES ON DIMENSIONS, UNLESS OTHERWISE NOTED ARE:**  
 SAWED, SHEARED AND GAS CUT EDGES ( $\pm 0.030"$ )  
 DRILLED AND GAS CUT HOLES ( $\pm 0.030"$ ) - NO CONING OF HOLES  
 LASER CUT EDGES AND HOLES ( $\pm 0.010"$ ) - NO CONING OF HOLES  
 BENDS ARE  $\pm 1/2$  DEGREE  
 ALL OTHER MACHINING ( $\pm 0.030"$ )  
 ALL OTHER ASSEMBLY ( $\pm 0.060"$ )

**PROPRIETARY NOTE:**  
 THE DATA AND TECHNIQUES CONTAINED IN THIS DRAWING ARE PROPRIETARY INFORMATION OF VALMONT INDUSTRIES AND CONSIDERED A TRADE SECRET. ANY USE OR DISCLOSURE WITHOUT THE CONSENT OF VALMONT INDUSTRIES IS STRICTLY PROHIBITED.

DESCRIPTION  
**3 LEVEL  
 RRU / EQUIPMENT RACK  
 FOR RTP FRAMES**

**SITE PRO 1**  
 Engineering Support Team:  
 1-888-753-7446

Locations:  
 New York, NY  
 Atlanta, GA  
 Los Angeles, CA  
 Plymouth, IN  
 Salem, OR  
 Dallas, TX

CPD NO.	DRAWN BY CEK 3/26/2015	ENG. APPROVAL
CLASS 81	SUB 01	DRAWING USAGE CUSTOMER
	CHECKED BY BMC 3/26/2015	

PART NO.	RTP-3UNT	PAGE 3 OF 3
DWG. NO.	RTP-3UNT	